



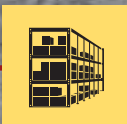
**STRONG PARTNERS.
TOUGH TRUCKS.™**



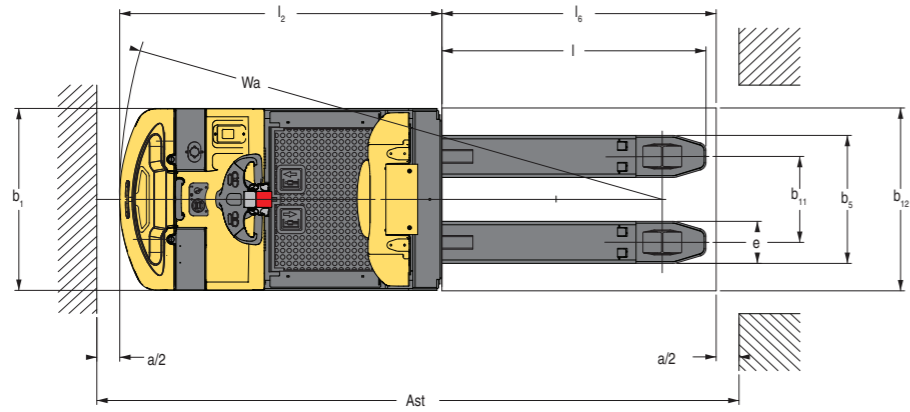
LOW LEVEL ORDER PICKERS

L01.0F, L02.0, L02.0S, L02.5

1 000-2 500 KG



LO2.0-2.5 TRUCK DIMENSIONS

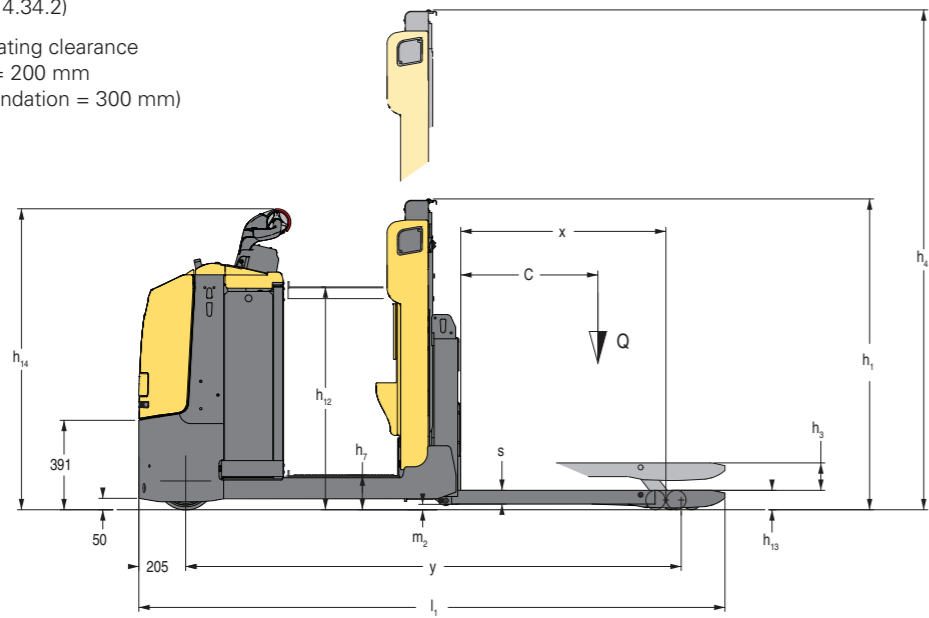


$$Ast = W_a - x + l_6 + a$$

(see lines 4.34.1 & 4.34.2)

a = Minimum operating clearance
(VDI standard = 200 mm
BITA recommendation = 300 mm)

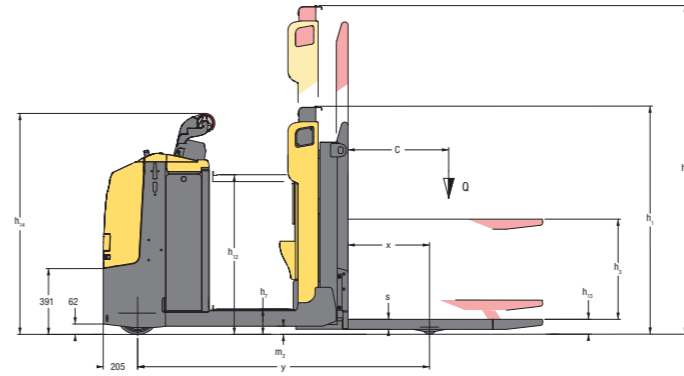
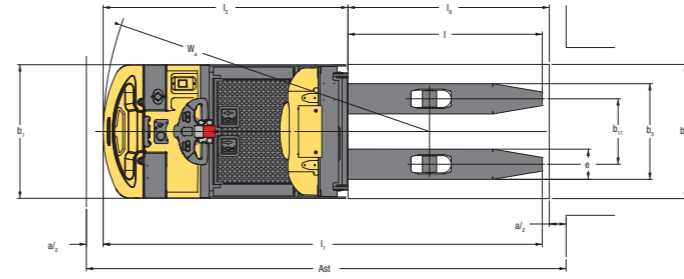
l_6 = Load length



FORKS TABLE

	C	l	x	l-x	$b_5 = 480\text{mm} - 530\text{mm} - 560\text{mm} - 670\text{mm}$			l_1	W_a	Ast★	y	l_2	l_1	W_a	Ast★	Fork★ Weights kg
					l_6 ◆	y	l_2									
	mm	mm	mm	mm	mm	mm	mm	mm	mm	mm	mm	mm	mm	mm	mm	
	500	1006	815	191	1000	2018	1408	2414	2224	2864	2163	1553	2559	2369	3009	118
	600	1156	965	191	1200	2168	1408	2564	2374	3037	2313	1553	2709	2519	3182	127
	700	1406	965	441	1400	2168	1408	2814	2374	3164	2313	1553	2959	2519	3309	136
	800	1596	1051	545	1600	2254	1408	3004	2460	3339	2399	1553	3149	2605	3484	144
	1000	1956	1405	551	2000	2608	1408	3364	2814	3730	2753	1553	3509	2959	3875	175
UK	1000	1956	1356	600	2000	2559	1408	3364	2765	3723	2704	1553	3509	2910	3868	176
	1100	2156	1405	751	2200	2608	1408	3564	2814	3903	2753	1553	3709	2959	4048	183
UK	1100	2156	1356	800	2200	2559	1408	3564	2765	3898	2704	1553	3709	2910	4043	184
UK 2.0	1200	2356	1650	706	2400	2853	1408	3764	3059	4109	2998	1553	3909	3204	4254	198
SHORT 2.0 2.5	1200	2356	1405	951	2400	2608	1408	3764	2814	4086	2753	1553	3909	2959	4231	191
LONG 2.0	1200	2356	1860	496	2400	3063	1408	3764	3269	4141	3208	1553	3909	3414	4286	200
2.0	1500	2856	1860	996	3000	3063	1408	4264	3269	4677	3208	1553	4409	3414	4822	220
UK 2.5	1200	2356	1650	706	2400	-	-	-	-	-	2998	1553	3909	3204	4254	214
LONG 2.5	1200	2356	1860	496	2400	-	-	-	-	-	3208	1553	3909	3414	4286	222
2.5	1500	2856	1860	996	3000	-	-	-	-	-	3208	1553	4409	3414	4822	242
CHEP short	583	1136	945	191	1165	2148	1408	2544	2354	3010	2293	1553	2689	2499	3155	130
CHEP long	1165	2330	1498	832	2330	2701	1408	3375	2907	4030	2846	1553	3520	3052	4175	217
GMA short	610	1181	990	191	1220	-	-	-	-	-	2338	1553	2734	2544	3205	132
GMA long	1220	2411	1518	893	2440	-	-	-	-	-	2866	1553	3964	3072	4277	203
GMA long	1250	2490	1518	972	2500	-	-	-	-	-	2866	1553	4043	3072	4332	208
	For all batteries				Battery 24V 465Ah					Battery 24V 500Ah/620Ah ◆						

LO1.0F TRUCK DIMENSIONS



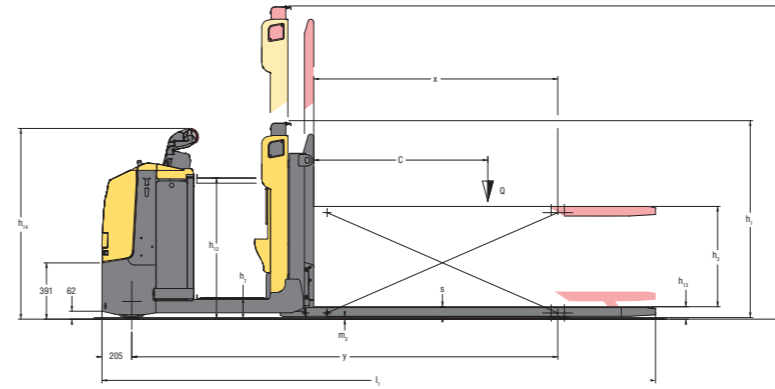
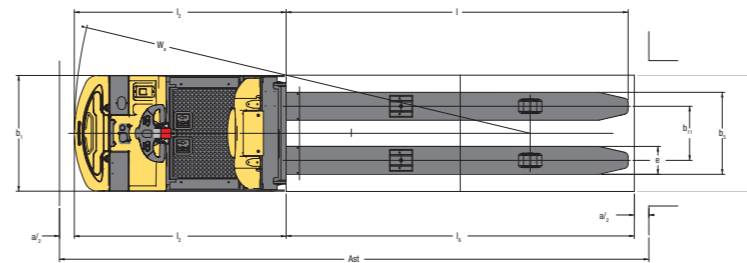
$$Ast = W_a - x + l_6 + a$$

(see lines 4.34.1 & 4.34.2)

a = Minimum operating clearance (VDI standard = 200 mm
BITA recommendation = 300 mm)

l_6 = Load length

LO2.0S TRUCK DIMENSIONS



$$Ast = W_a - x + l_6 + a$$

(see lines 4.34.1 & 4.34.2)

a = Minimum operating clearance (VDI standard = 200 mm
BITA recommendation = 300 mm)

l_6 = Load length

NOTE:

Specifications are affected by the condition of the vehicle and how it is equipped, as well as the nature and condition of the operating area. Inform your dealer of the nature and condition of the intended operating area when purchasing your Hyster Truck.

- Available battery 465Ah. With battery 465Ah -145mm, and service weight -114kg
- † Available battery 500Ah. With battery 500Ah service weight -2kg
- ‡ Applies to 2 pallets = 2400mm
- ⊕ Optional 10/13 km/h (LO2.0-LO2.0S) and 9/13 km/h (LO2.5)
- ✓ Optional 12/13 km/h (LO1.0F)
- ◆ For models LO2.0, LO2.5, see "Forks table"
- ⊕ Values obtained with 40 cycles
- ⊗ These values may vary of +/- 5%
- With forks "CHEP long" e = 223mm, b11 = 447mm
- With drive wheel in tophane: 3200N
- Transfer aisle widths (lines 4.34.1 & 4.34.2) are based on the VDI standard calculation as shown on illustration. The British Industrial Truck Association recommends the addition of 100 mm to the total clearance (dimension a) for extra operating margin at the rear of the truck.

FORKS

Note: all values of y, x, W_a are intended with lowered forks; with forks lifted 120mm all values of y, x, W_a are 70mm less

- ◆ GMA version: applies to 2 pallets = 2440mm
- ◆ Battery 620Ah available for 2.5 Ton. version only.
- ✖ All weights are: forks + tie rods.
- ★ Aisle width for pallets 800mm x l_6 lengthways.

NOTICE

Care must be exercised when handling elevated loads. When the carriage and/or load is elevated, truck stability is reduced. It is important that mast tilt in either direction be kept to a minimum when loads are elevated. Operators must be trained and must read, understand and follow the instructions contained in the Operating Manual.

All values are nominal values and they are subject to tolerances. For further information, please contact the manufacturer.

Hyster products might be subject to change without notice.

Lift trucks illustrated may feature optional equipment. Values may vary with alternative configurations.

CE Safety:

This truck conforms to the current EU requirements.

PRODUCT FEATURES

The LO2.0 Fixed or raising platform for ground up to second level picking, able to handle various types of load interface, Europallets, Chep, roll containers etc.

The LO2.5 Fixed or raising platform for ground up to second level picking, with 2.5t capacity for transporting heavy double full pallet loads.

The LO2.0S allows the handling of double pallets (Europallets) where heavy and/or bulky case picks are the items handled. Here the scissor lift height serves to eliminate constant bending and stretching.

The LO1.0F with mast lift allows the pallet to be maintained at a constant comfortable working height. Therefore it is ideally suited for single Europallet layer picking operations.

DEPENDABILITY

- Solid frame construction and reliable components ensure long-term reliability and durability.
- Sturdy wrap around bumper plate protects the truck against impacts and damage and minimises repair costs.
- LLOP - Robust pull road design on the load wheel axle ensures long term reliability.
- Protected electronics, including the enclosed AC traction motor, sealed combi-controller (with IP65 rating), sealed electrical connectors and hall effect sensors and switches ensure excellent reliability and reduced servicing costs for maximum productivity.
- Reduced wiring complexity, thanks to the CANbus communication system provides easy access to components and world-class reliability.

COST OF OWNERSHIP

- Integrated system controls, AC traction and DC pump motors enhance energy efficiency.
- Advanced control features, such as adjustable performance settings allow the truck to be tailored to the needs of the application, reducing energy consumption.
- Regenerative braking reduces use of service brake and dissipates heat of traction motor, ensuring the longer life of key components.
- Motors and controllers are protected against damage and debris, reducing servicing and repair costs.

PRODUCTIVITY

- Powerful 2,6kW AC drives motor with high performance acceleration / braking and travel speed feature high thermal capacity for stop and go operations.
- Effortless electrical steering and automatic speed reduction on cornering ensures excellent control and high productivity.
- Acceleration, travel and braking speeds can be adjusted to the particular needs of the application via the console by a service engineer.
- Anti-roll back on ramps device, active for driver operation.
- LLOP models offer nominal capacity up to 2500kg and 48 different forks options, enabling the truck to be configured to suit the varying operational requirements of a vast range of applications.
- Maximum travel speed of 13 km/h without load (optional) reduces travelling time on long runs between docking and picking areas.
- Large battery capacity means the truck is perfect for dual shift operations and reduces the frequency of battery charging. Vertical or lateral battery extraction are available.

ERGONOMICS

- Scooter control and electric steering reduces the arm movement required to change direction, keeping the driver within the truck footprint at all times for his protection and reduces operator fatigue and increases productivity.
- Platform sensor, which detects when the operator is on board, covers the entire platform floor, which along with the high, soft touch, back rest, allow operators to locate the most comfortable driving position.
- Wide and long operator platform provides increased comfort operator stance and allows easier pass through to optimize picking on both sides.
- LLOP - Foot controlled lifting platform option facilitates up to second level picking and limits the amount of reaching the operator has to do from rack to pallet, reducing operator fatigue.

- On LO2.0 and LO2.5 optional slow-speed forward direction buttons (coasting function) are located on the backrest and allow the operator to move the truck whilst walking alongside, to the next pick location without having to board.
- On LO1.0F and LO2.0S optional coasting function provides also lifting/lowering forks controls to allow the operator to maintain the pallet at a constant comfortable working height.

SERVICEABILITY

- CANbus system and diagnostic control can be controlled and monitored via the console or a single plug-point plus fault codes can be displayed on console for easy service identification.
- One-piece hood provides easy access to key components.
- Motor cover is fitted by means of two screws and can be easily removed to get full access to all the main components.
- Low maintenance AC traction motor with built in thermal protection is fully enclosed for protection against damage and debris, minimising service downtime.

AVAILABLE OPTIONS INCLUDE:

LO2.0, LO2.5

- 48 different fork dimensions.
- 2nd level foldable step (only for LO2.0 and LO2.5 models with fixed operator platform).
- Removable trash bin in operator back rest (for models with fixed operator platform).
- Coasting function with slow-speed forward buttons.

LO1.0F, LO2.0S

- Coasting function with slow-speed forward, lifting and lowering forks buttons.

MISCELLANEOUS

- Key pad
- Cold store version
- Side battery extraction
- Floor-level bumper (rubber bumper)
- Mid mounted bumper (bull bar)
- Universal support bar on motor compartment
- Various drive wheels
- Various platform lift heights
- Various storage compartments
- Object tray on operator back rest.
- Scooter control raising with platform
- Standard and extended warranty options
- Hyster Tracker Wireless Asset Management system

STRONG PARTNERS. TOUGH TRUCKS.™

FOR DEMANDING OPERATIONS, EVERYWHERE.

Hyster supplies a complete range of warehouse equipment, IC and electric counterbalanced trucks, container handlers and reach stackers. Hyster is committed to being much more than a lift truck supplier.

Our aim is to offer a complete partnership capable of responding to the full spectrum of material handling issues: Whether you need professional consultancy on your fleet management, fully qualified service support, or reliable parts supply, you can depend on Hyster.

Our network of highly trained dealers provides expert, responsive local support. They can offer cost-effective finance packages and introduce effectively managed maintenance programmes to ensure that you get the best possible value. Our business is dealing with your material handling needs so you can focus on the success of your business today and in the future.



HYSTER EUROPE

Centennial House, Frimley Business Park, Frimley, Surrey, GU16 7SG, England.

Tel: +44 (0) 1276 538500



www.hyster.eu



infoeurope@hyster.com



[/HysterEurope](https://www.facebook.com/HysterEurope)




[@HysterEurope](https://twitter.com/HysterEurope)




[/HysterEurope](https://www.youtube.com/HysterEurope)

HYSTER-YALE UK LIMITED trading as Hyster Europe. Registered Address: Centennial House, Building 4.5, Frimley Business Park, Frimley, Surrey, GU16 7SG, United Kingdom.

Registered in England and Wales. Company Registration Number: 02636775.

HYSTER,  and FORTENS are registered trademarks in the European Union and certain other jurisdictions.

MONOTROL® is a registered trademark, and DURAMATCH and  are trademarks in the United States and in certain other jurisdictions.

Hyster products are subject to change without notice. Lift trucks illustrated may feature optional equipment.